

# XSOL InOrder

## What is XSOL InOrder?

XSOL InOrder is Enterprise Process Planning & Execution software. It helps organizations in 3 areas:

- To provide staff with well-defined job instructions and procedures, access to IT system functions, training videos, technical specifications, in fact with everything they need at their desk when they need it – **Deploy**
- To select, implement or update an ERP system, make organizations Lean, merge or restructure a business unit, or complete any **Change** program - on time and budget.
- To know what is happening in a business operationally and analyze this. Have the ability to aggregate times, costs and margins, from task level to the executive suite by role, process, or any classification – **Analyze**.

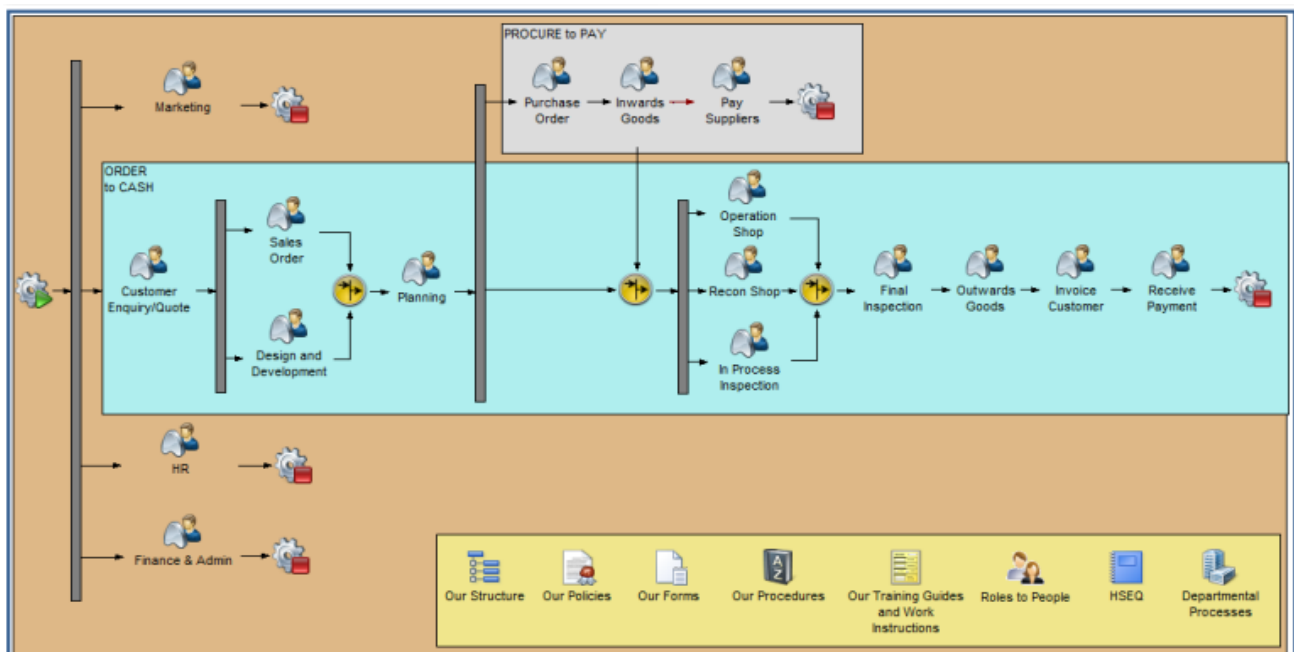
It provides visibility into the ‘operational fog’ that causes change programs to go off track. Staff see the change and buy in. It makes improving operations routine, provides metrics at all levels and enables the impact of a change to be simulated before implementation.

### BUSINESS VISUALIZATION

The best way to understand something is to see a picture. XSOL uses process models to describe what happens within an organization. They can be highly detailed, they are easy to understand and use ‘business’ language.

XSOL is more productive than other methods of business definition due to its unique business structure that fits any organization. It makes business definition like ‘painting by numbers’. It has underlying functions that cut the work you have to do. Spreadsheets use a similar technique.

“XSOL is a must-have. After the first pass, our efficiencies have improved, our documentation has improved, the level of detail has improved, and the business ownership has improved. We have got systemic benefits all the way around”.





## OPERATIONAL DEPLOYMENT

At any time, 'at the push of a button', operational instructions can be deployed for all or part of the business – in HTML, spreadsheet or Word. An Operational Process Plan can contain process flows, documents, pictures, videos and links to external software such as a spreadsheet or an ERP function. .

This means that new employees can come in and become productive fast One of the key benefits of the XSOL model structure is that when a change is entered the model can tell whether or not it is correct. This means accurate changes can be applied and redeployed in record time

Entities	Type
Approve & Pay Accounts Pa...	Process
Modify Payment	Companion Pro...
Process Flow	Process Flow
Any Invoice Recharging R...	Decision node
Approve Payment Selecti...	Stage
Automatic Payments	Stage
Cheque Approval	Stage
Determine Appropriate P...	Stage
Issue Cheques	Stage
Receive Coded Rechargin...	Stage
Stage	Stage
Role Assignments	Escalate To

**Warnings and Errors:**  
A stage must have at least one task

Top: Process Model Multi-page HTML Output

Above: Process Model Word Output

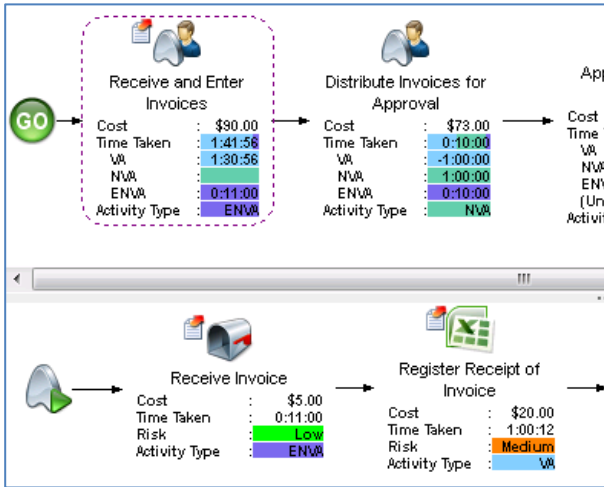
Above: Error Checking your Model

“XSOL allows you to keep everything in one location, which matters, because one of the biggest challenges in an ERP implementation is keeping everything in sync as things inevitably change: policies, procedures, forms, manuals, specification “.

## PROCESS ANALYTICS

XSOL allows the definition of almost any type of data you might want to collect. However, if it is arithmetic it can be used for operational analysis.

How long does it take to process a Sales Order? How much does this cost? What if we used a contractor, how much would it cost then?



Above: Aggregated analytics in flow

XSOL's model is similar to a manufacturing Bill of Materials, except in XSOL's case it is a Bill of Business, containing potentially every activity and resource in an organizational structure – department, company and enterprise. This offers the same 'What if' time and cost analysis, and 'Where Used' capability as the BOM.

The analytics have been designed to handle Lean process improvement including Value Stream Mapping with all the Valued Added and other data components able to be aggregated and displayed at any level in the organization. It enables senior management to set and monitor objectives at say the process level and lets operational managers convert these into targets within their own areas.

Process Groups/Note Groups		Count	Cost (Sum)	Time Taken (Sum)			Risk (Min.)
				Total	VA	NVA	ENVA
<b>Support Processes Detail</b>		<b>28</b>	<b>\$3,080.00</b>	<b>9:10:00</b>	<b>5:24:00</b>	<b>2:25:00</b>	<b>1:21:00</b>
Approve & Pay Accounts Payable		26	\$163.00	2:37:00	1:14:00	1:12:00	0:11:00
Receive and Enter Invoices		15	\$90.00	1:37:00	1:14:00	0:12:00	0:11:00
Receive Invoice		3	\$5.00	0:11:00			0:11:00
Register Receipt of Invoice		3	\$20.00	0:12:00		0:12:00	
Create Invoice Batch		3	\$40.00	0:30:00	0:30:00		
Enter & Park Invoices		3	\$25.00	0:44:00	0:44:00		
Distribute Invoices for Approval		9	\$73.00	1:00:00		1:00:00	
Mark Invoices for Approval		3	\$40.00	0:35:00		0:35:00	
Send Approval Requests to Finance Manager		3	\$33.00	0:25:00		0:25:00	
Approve and Return Invoices							

Above: Notes Matrix Report

STAGES	Cost	Time Taken	Risk	TASKS	TYPE	Cost	Time Taken	Activity Type	Risk	ROLE
Receive and Enter Invoices	\$90.00	VA: 1:14:00	High	Receive Invoice	Manual	\$5.00	0:11:00	ENVA	Low	AP Clerk
Receive and Enter Invoices				Register Receipt of Invoice	MS Excel	\$20.00	0:12:00	NVA	Medium	AP Clerk
Receive and Enter Invoices				Create Invoice Batch	ERP System	\$40.00	0:30:00	VA	High	AP Clerk
Receive and Enter Invoices				Enter & Park Invoices	ERP System	\$25.00	0:44:00	VA	High	AP Clerk
Receive and Enter Invoices										AP Clerk
Receive and Enter Invoices										AP Clerk
Distribute Invoices for Approval	\$73.00	NVA: 1:00:00	Medium	Mark Invoices for Approval	Non-XSol	\$40.00	0:35:00	NVA	Medium	AP Clerk
Distribute Invoices for Approval				Send Approval Requests to Finance Manager	Non-XSol	\$33.00	0:25:00	NVA	Low	AP Clerk
Distribute Invoices for Approval										AP Clerk
Distribute Invoices for Approval										AP Clerk

Above: Model Hierarchy CSV Output

For more information contact [enquiry@xsol.com](mailto:enquiry@xsol.com)



**XSOL**