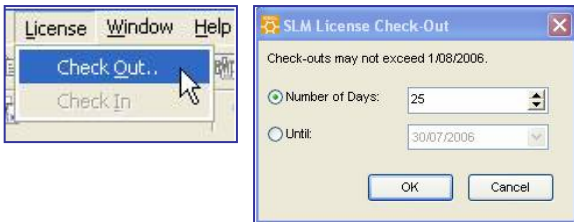


XSOL Mapping - Shared Licence Manager (SLM v2)

With Release 3.17 of XSOL Mapping, a new version of the concurrent licensing manager is available: Shared License Manager Version 2.



Key features of SLM v2 are as follows:

Manage concurrent use of Mapping licenses

SLM v2 automatically manages concurrent usage of XSOL Mapping within the organisation. Any user with XSOL Mapping loaded on their PC can use the software - subject to a maximum number of copies being in use at the same time.

This allows organisations to enable any number of potential users with XSOL Mapping, but to purchase only the number of licenses they require. Organisations can then add to the 'pool' of concurrent copies they have, at any time.

Enable Mobile / Remote Operation

Licenses can be 'checked out' to a specific user for a defined period, allowing the user to disconnect from the company network and still use XSOL on their laptop for the specified time.

Once a licence is checked out, the number of concurrent copies available for networked users decreases by one. Licenses can be 'checked back in', once the user is again connected to the network.

Alternatively, after the defined time period, checked-out licenses automatically expire - effectively checking themselves back in.

Provide Dedicated Access

Licenses may be checked out to a user, even if they stay connected to the corporate network. This will ensure that user will have continuous access to the software, regardless of the demand for licenses from the rest of the organisation.

Administrator Control

SLM v2 comes with a web-based administrator control panel that controls:

- The number of concurrent copies that are check-out capable
- The maximum number of days a user can specify, when checking out their software

Comparison of SLM v2 to standalone licensing for XSOL Mapping:

	Stand Alone	SLM v2
Share Licenses between multiple users		✓
Mobile / Remote Operation	✓	✓
Dedicated access	✓	✓

SLM v2 System Requirements

XSOL Mapping - runs on each Desktop / Laptop with the following specification:

- Pentium 3 (or higher), Minimum 512 MB
- 35 - 50MB free Disk space
- MS Windows 2000, SP2/3 or MS Windows XP Professional
- MS Word 2000 (or higher). MS Word 2003 is required for advanced Release 3.17 documentation features
- MS Installer 2.0 & MSXML 4.0 are supplied with the XSOL Mapping Installer

Shared License Manager - runs on a Microsoft IIS server (which is not a domain controller) accessible to each XSOL Mapping user. The IIS server must be up and running in order for XSOL Mapping users to validate license keys. The IIS server also requires:

- MSXML 4.0 installed
- Approx. 1MB of disk space

How SLM v2 works

When XSOL Mapping is initially activated on each PC, details of the IIS http address are provided. XSOL Mapping validates the license key by making a call to the IIS SLM program that manages the license process (stored in a file of approx 50k)

While in use, XSOL Mapping will revalidate its issued license approx every ten minutes – this transaction consumes less than 1kb of network bandwidth.

XSOL Mapping has been validated to run on Citrix Metaframe Presentation Server